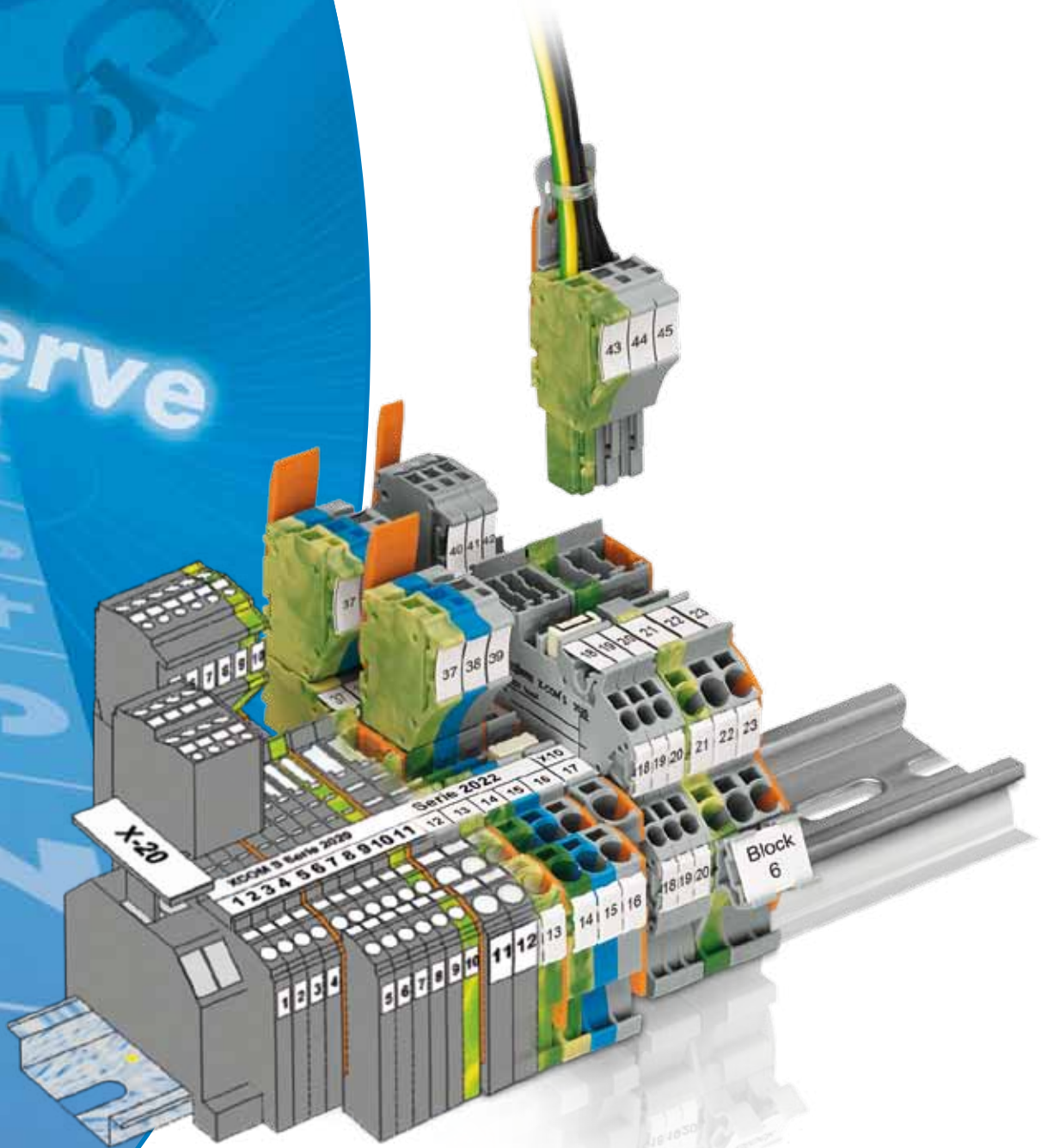


WAGO ProServe®

Designing, Assembling and Marking

ProServe



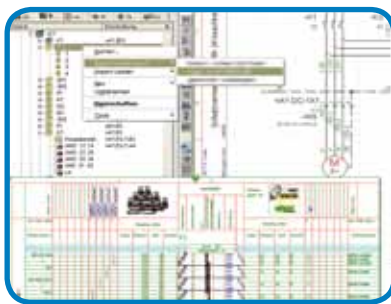
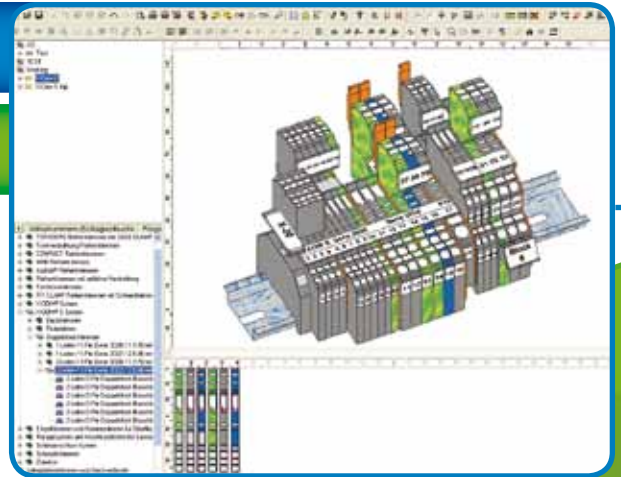
**WAGO**®  
INNOVATIVE CONNECTIONS

# ProServe® – Planning

## at a New Level

WAGO ProServe® means finding instead of searching, drawing instead of sketching. ProServe® readily navigates through the WAGO range of products, and generates parts lists and assembly drawings. The ProServe® 3D view “spins” the rail assembly for a thorough overview during planning and assembly.

WAGO ProServe® has an interface compatible with commonly used CAD/CAE systems.



RUPLAN



Engineering Base

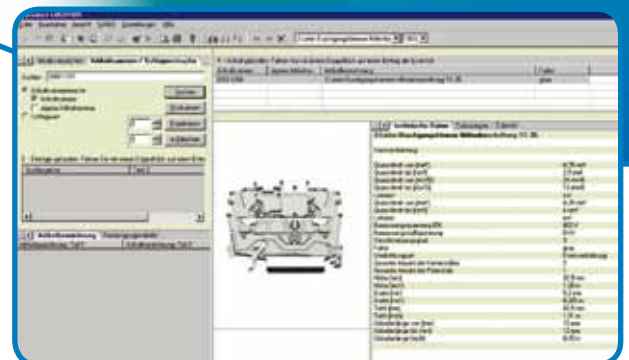
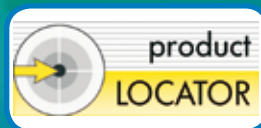


ELCAD



smartDESIGNER

productLOCATOR



## smartDESIGNER and productLOCATOR

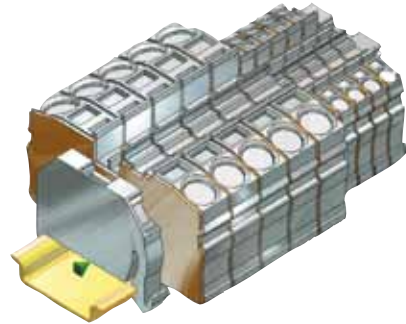
- Interfaces to CAE and M-CAD programs
- Output in PDF and HTML
- Different search functions provide quick item selection
- Creation of part lists including product pictures and custom part numbers
- Complex rail assemblies can be easily designed in 3D
- Easy creation of custom part numbers
- Creation of custom items to design third-party products
- Default parts (favorites) can be defined individually, streamlining design time
- Intelligent, user-optimized accuracy check features
- 18 languages available
- Over 25,000 products

### Marking:

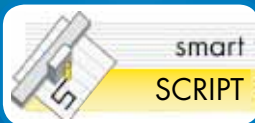
- Direct creation and output of marking data to plotter or thermal transfer printer

CAD

STEP – IGES –  
DXF – DWG



smartSCRIPT



### smartSCRIPT

- Extensive import functions from CAE systems, MS Office and WAGO smartDESIGNER
- WYSIWYG marking
- Automatic plotter calibration
- Extensive library, including marker carriers
- Symbol library
- Text length checking
- Several languages available
- Fully compatible with EG 450 Engraver
- Direct output to thermal transfer printer
- Creation of custom markers for engraver/plotter



# smartDESIGNER – Version 6

In Version 6, the ProServe® software was changed over from Access databases to a SQL server database. With this new version, previous individual databases are stored in a master database on the SQL server.

**IMPORTANT: Only ACCESS databases of version 5.4 can be changed over to an SQL server!**

## Your benefits from the database changeover:

- Projects in XML format from previous versions remain available
- Increased availability
- Higher performance
- Improved network capability
- Easy update
- Safe, time-saving operation



For download, please go to [www.wago.us](http://www.wago.us):

**Service/ProServe®/Software/  
Download ProServe®-Software V6**

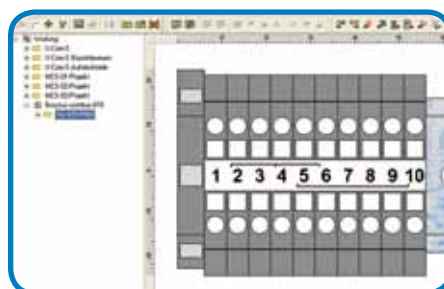
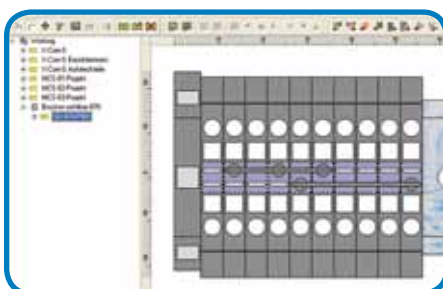
Here you can find more about the database changeover.

### Jumper positions on strips:

- Jumper positions below the strip are now shown and printed on the strip especially for 870 Series
- Improved documentation for rail assembly

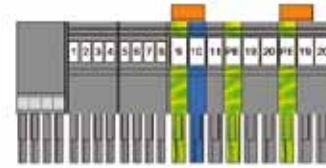
### Individual MCS projects:

- Easy communication via pictures
- Creation of individual data sheets
- Time-saving production via manufacturing documents
- Time saving via improved documentation options

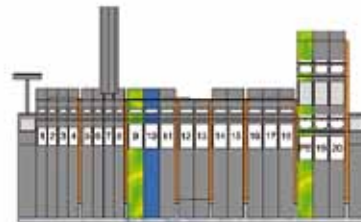


### Dividing X-COM® projects:

- Two individual files for carrier terminal blocks and female plugs
- Faster ordering in two separate projects



Plugs



Carrier terminal blocks

### Further Benefits of New Version 6

#### Export from smartDESIGNER to smartSCRIPT:

- Independent operation on "printer PC"

#### Marking strips – horizontal separator line:

- Individual setting of horizontal and vertical separator lines

#### AutoSave:

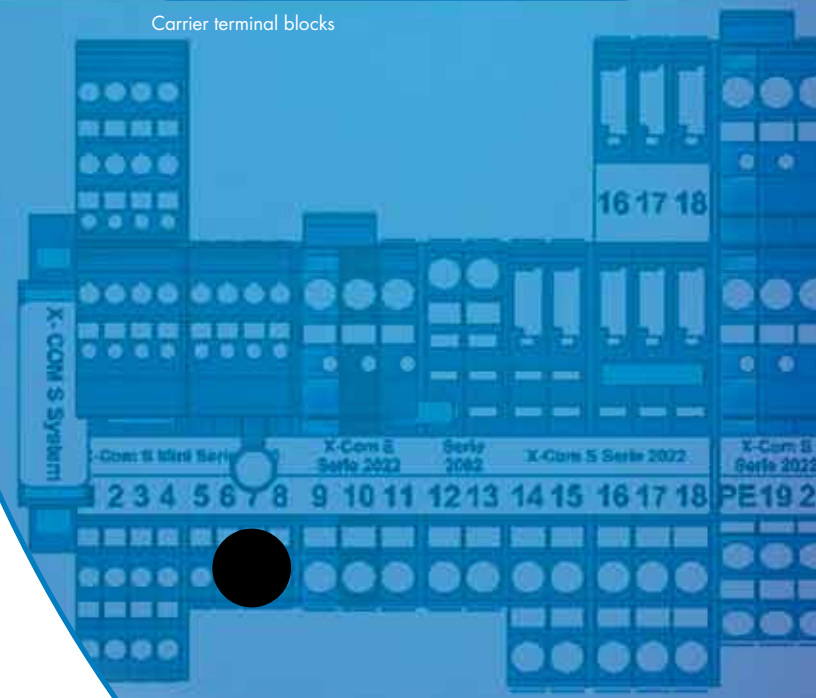
- Automatic storage after 5 minutes

#### Export of item lists:

- Different options can be selected to export parts lists into individual files or as sum list
- Easy and fast further processing, e.g. SAP

#### Compressing terminal blocks:

- Select blocks with empty spaces, click "Compress block" via right mouse button



# The Marking System in Switchgear Cabinet –

## All at a Glance

### Marking Strips/Labels

Print with TTP-345 or TP 298+

Item no.	Continuous Strips			
210-701	Marking strips	15 mm	white	50 m roll
709-120	Receptacle for marking strips		transp.	1 m long
757-901/000-050	Marking strips	10 mm	white	50 m roll
Adhesive Labels				
210-703	Label roll	70 x 100 mm	white	500 pcs/roll
210-704	Label roll	70 x 100 mm	silver	500 pcs/roll
210-705	Label roll	6 x 15 mm	white	3000 pcs/roll
210-705/000-002	Label roll	6 x 15 mm	yellow	3000 pcs/roll
210-706	Label roll	9 x 15 mm	white	3000 pcs/roll
210-706/000-002	Label roll	9 x 15 mm	yellow	3000 pcs/roll
210-707	Label roll	8 x 20 mm	white	3000 pcs/roll
210-707/000-002	Label roll	8 x 20 mm	yellow	3000 pcs/roll
210-708	Label roll	9.5 x 25 mm	white	3000 pcs/roll
210-732	Continuous label	3 mm	white	12 lengths at 25 m



210-707/000-002

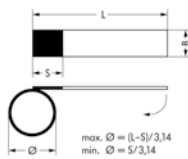


210-701 and 709-120

### Wire Marking



Marking sleeve 12 mm, for core diameter	Item no.	Marking sleeve 23 mm, for core diameter	Item no.
1.6-3.2 mm or 0.25 mm <sup>2</sup> -1.5 mm <sup>2</sup>	211-112	1.6-3.2 mm or 0.25 mm <sup>2</sup> -1.5 mm <sup>2</sup>	211-122
2.2-4.5 mm or 0.5 mm <sup>2</sup> -4 mm <sup>2</sup>	211-113	2.2-4.5 mm or 0.5 mm <sup>2</sup> -4 mm <sup>2</sup>	211-123
3.7-5.9 mm or 2.5 mm <sup>2</sup> -6 mm <sup>2</sup>	211-114	3.7-5.9 mm or 2.5 mm <sup>2</sup> -6 mm <sup>2</sup>	211-124
4.8-7.5 mm or 6 mm <sup>2</sup> -16 mm <sup>2</sup>	211-115	4.8-7.5 mm or 6 mm <sup>2</sup> -16 mm <sup>2</sup>	211-125
Marker card for plotter, 12 mm, 57/card	211-110	Marker card for plotter, 23 mm, 34/card	211-120
Marker tag for TT printer, 12 mm, 3,000 pcs	211-111	Marker tag for TT printer, 23 mm, 3,000 pcs	211-121



		Marking sleeve for cable tie, 23 mm, for single cores from 10 mm	211-129
		Cable tie (2.5 x 100) mm	807-0090/ 0101-0100

Labels on DIN A4 sheets for laser printers	
Marker surface "S" = 9 mm, "B" = 17 mm, "L" = 35 mm for cable diameter max. 8 mm 70 labels per sheet	211-150
Marker surface "S" = 13 mm, "B" = 21 mm, "L" = 56 mm for cable diameter max. 14 mm 32 labels per sheet	211-151
Cable tie marker KBM 25 x 10	211-135

Labels on roll for thermal transfer printers	
Marker surface "S" = 8 mm, "B" = 18 mm, "L" = 35 mm for cable diameter max. 9 mm 9000 labels per roll	211-155
Marker surface "S" = 13 mm, "B" = 23 mm, "L" = 51 mm for cable diameter max. 12 mm 5000 labels per roll	211-156
Core marker for threading	
on roll, 2,000 pcs, white / 0.75 - 1.5 mm	211-161
on roll, 2,000 pcs, white / 2.5 - 6.0 mm	211-162

Heat shrink tubing, 3 to 1 polyolefin, 100 ft		Before/After Shrinking	
1/8" (18 - 24 AWG)	White, 51223870	Yellow, 51227742	.125"/.039"
3/16" (12 - 18 AWG)	White, 51223871	Yellow, 51227743	.187"/.059"
1/4" (6 - 10 AWG)	White, 51223872	Yellow, 51227744	.250"/.083"



211-121 with sleeve

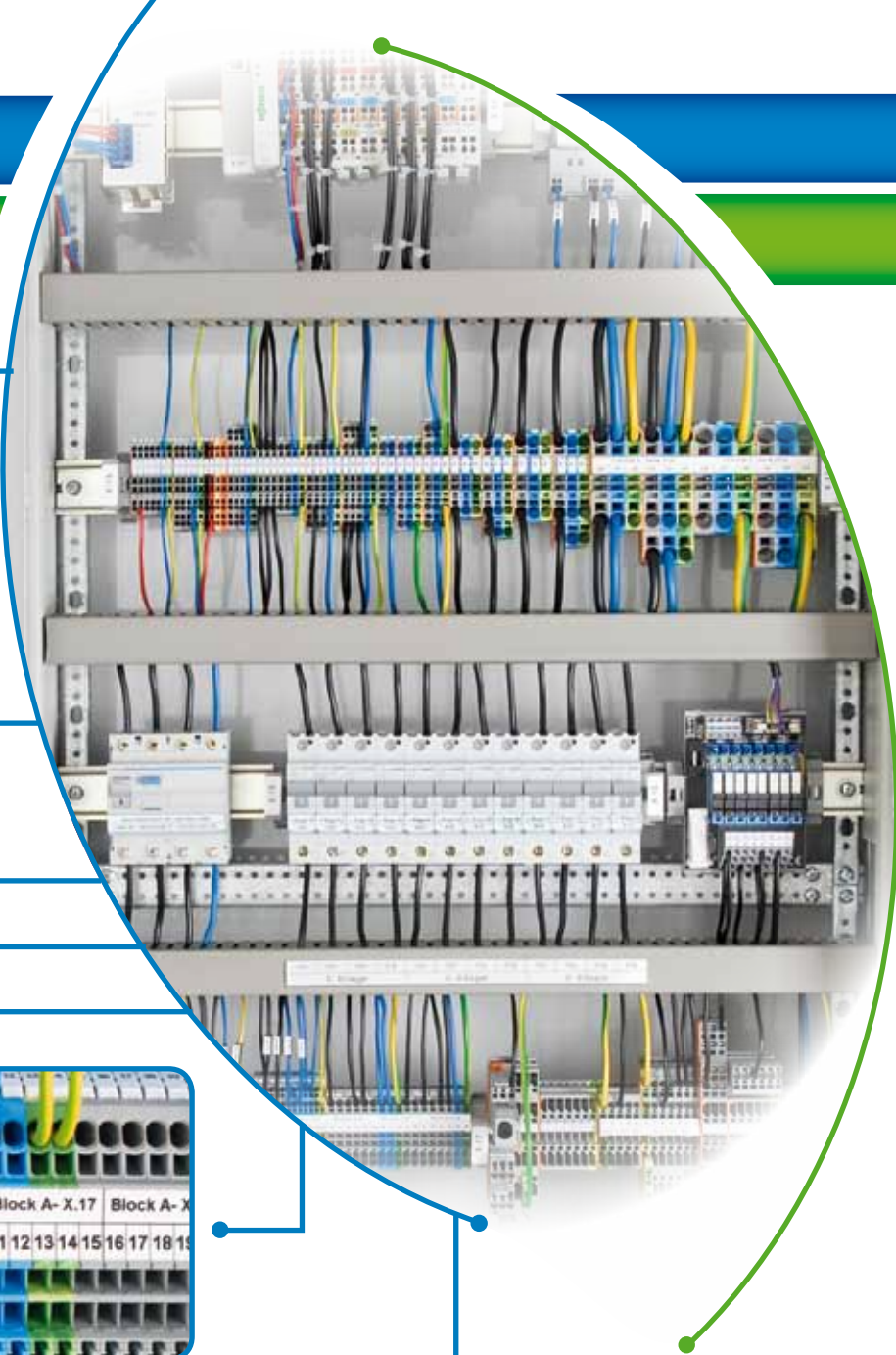


211-155

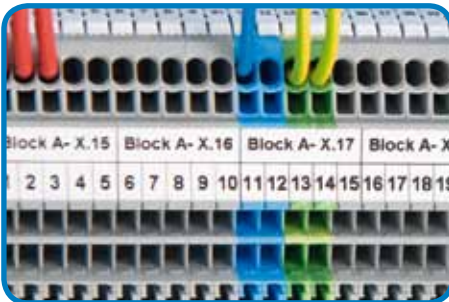
211-135



211-161



2009-110



### Marking Strips



Print with TTP-345 or TP298+

... for TOPJOB® S Series

Item no.

white, plain, width 11 mm

50 m roll

2009-110

... for 870, 869, 862, 270 and I/O 750 Series

white, plain, width 7.5 mm

50 m roll

709-178

300 m roll

709-188

translucent, plain, width 7.5 mm

50 m roll

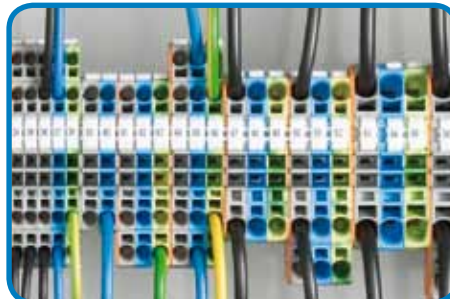
709-177

300 m roll

709-187

2009-114

2009-115



### WMB Inline



Print with TP298+ only

Item no.

Pitch 5 mm, stretchable 5 mm - 5.2 mm, on roll

white, 1,500 pieces

2009-115

white, 8,000 pieces

2009-135

Pitch 4 mm, stretchable 4 mm - 4.2 mm, on roll

white, 2,000 pcs

2009-114

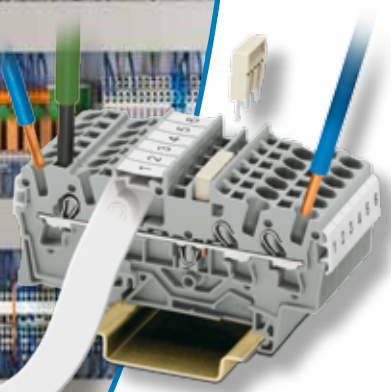
white, 9,500 pcs

2009-134



# WAGO Thermal Transfer

## Printer Overview



- 3M - PL300 or DYMO RHINO 6000**
- TOPJOB®S marking
  - USB interface (processing via Windows printer drive)
  - Manual print output or via smartSCRIPT
  - Hotkeys for fuse marking, patch cabinets, cable and wire marking
  - Own library


3M - PL300 Thermal Printer	
3M - PL300	258-6000
Print resolution:	180 dpi
Types of tape:	Permanent polyester, flexible nylon, vinyl, heat-shrinkable tube
Tape cutter:	Yes
Size of display:	65 x 35 mm
PC connection:	USB
Battery charge indicator:	Yes

**TOPJOB®S Cartridge for 3M - PL300 or DYMO RHINO 6000**  
 Available through WAGO only.

TOPJOB®S Cartridge	
Polyester strips for TOPJOB®S marking	
11 mm wide strips – 5.5 m running length in a cartridge	211-611

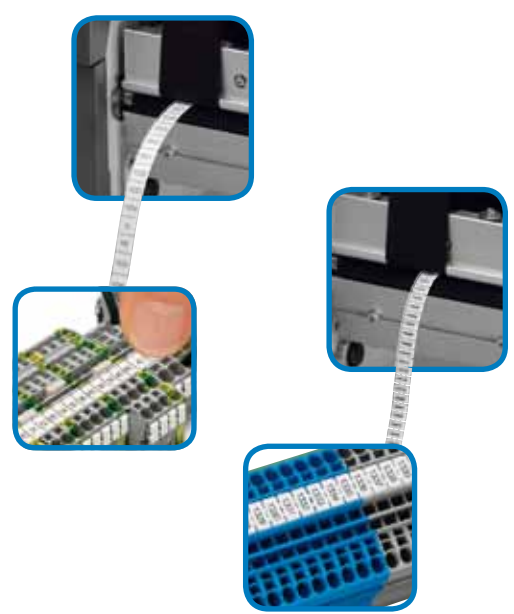
### TP 298+ Thermal Transfer Printer

#### TP 298+ Thermal Transfer Printer Accessories

		
258-298/RN01-0000	Item no.	
Thermal/thermal transfer	External coil mounting system	258-169
300 dpi	for 8,000 pcs WMB	
108.4 mm		
Serial RS-232 C	Cutter for TP 298	258-161
ETHERNET10/100 USB Base T		
	Spare roller for TP 298	
	TP 298 labels	258-177
	TP 298 WMB Inline	258-178
	3-fold WMB Inline	258-181



The TP-298 printer offers convenient marking using the WMB markers on a continuous reel or the continuous marking strip...multiple lines of text is available with the continuous strip.



### TTP-345 Thermal Transfer Printer

The TTP-345 printer offers quick and economical marking using the continuous marking strip... multiple lines of text is even possible.

#### TTP-345 Thermal Transfer Printer



Basic	258-345/0000-0100
w/Ethernet	258-345/0000-0200
Printing method	Thermal/thermal transfer
Print resolution	300 dpi
Print width	max. 104 mm
Interfaces	USB+ETHERNET



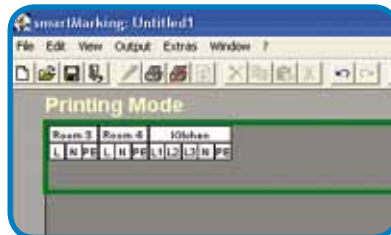
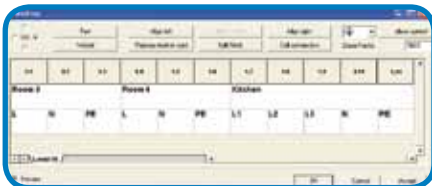
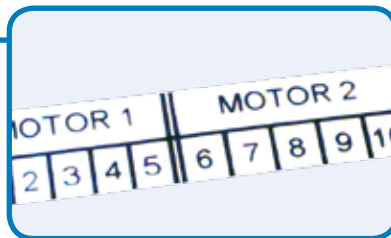
### Ink Ribbon for Thermal Transfer Printers TTP-345 and TP 298+

Item no.	Ink ribbon	Width	Marking accessories
258-143	Resin/wax	60 mm	Labels (paper)
258-144	Resin/wax	100 mm	Labels (paper)
258-145	Resin	38 mm	Continuous marking strips and WMB Inline (TP 298+ only)
258-149	Resin	50 mm	Marking strips for 2009 Series Marking strips for 709 Series WMB Inline (TP 298+ only)
258-150	Resin	76 mm	Wire marking 211-111 and 211-121 for labels (polyester) up to 76 mm in width
258-157	Resin	100 mm	Wire marking 211-111 and 211-121 for labels (polyester) up to 100 mm in width

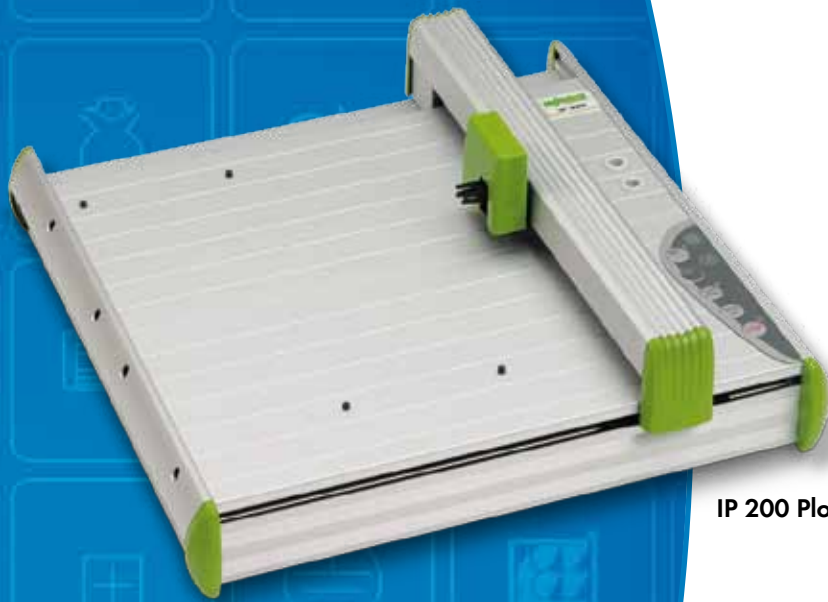
All ink ribbon length is 300 m

### Multi-Line Marking

- Create using Smart Marking, Smart Designer or Smart Script
- Helps minimize wiring errors
- Perfect solution for marking on TOPJOB®S series terminal blocks
- Print using the TTP-345 or TP 298+



# Plotter – The Universal Device



IP 200 Plotter

## Marker Cards

	Item no.
WMB 5 mm	793-501
WMB 4 - 4.2 mm	793-4501
WMB 5 - 5.2 mm	793-5501
WSB 5 - 8 mm	209-501
Miniature WSB	248-501
WSB 4 mm	209-701

## Item number suffix for colored marker cards

yellow	.../000-002
red	.../000-005
blue	.../000-006
gray	.../000-007
orange	.../000-012
light green	.../000-017
green	.../000-023
purple	.../000-024

## IP 350 A3/IP 350 A4 Plotters

## Plotter Pens

## EG 450 Engraver

## Marker Card Carrier Plates for IP 350 Plotter

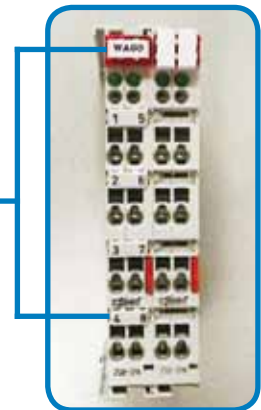
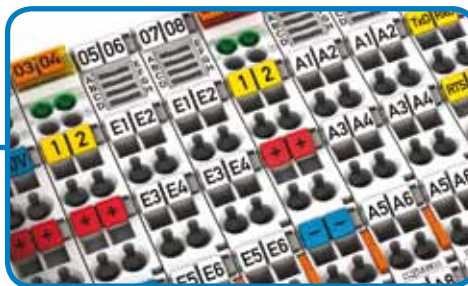
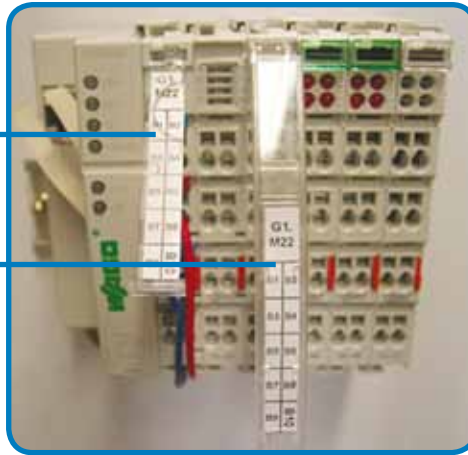


	Item no.	Item no.	Item no.	Item no.	Item no.	Item no.										
IP 350 A3	258-350	<b>Plotter pens for outside and inside marking</b>		258-450	<b>Carrier plates for WAGO</b>											
Voltage range	Nominal voltage	<b>WAGO plotter pen</b>	<b>Disposable</b>	Extension module for IP 350 Plotter	WSB 5 mm (209-501)	258-361 ZBM										
	120-240 V ~ 50/60 Hz	0.18 mm line width	258-326	Consisting of the "EG 450" control unit and Vacuum Cleaner "VC 450"	WSB 4 mm (209-701)	258-362 ZB										
	min. 90 V ~ max. 264 V	0.25 mm line width	258-327	incl. graver 0.3 mm + 0.4 mm	Miniature WSB (248-501)	258-363 ZBN	258-374									
		0.35 mm line width	258-328	<b>Graver set</b>	WCB (249-200)	258-366 ZBFM	258-375									
		0.5 mm line width	258-329	15° angled	WMB 5 mm (793-501)	258-368 BNZ	258-377									
IP 200	258-200	<b>WAGO plotter pen for internal marking</b>	0.18 mm line width	258-226	for processing plastics	Marker tags	258-365 BN-ZB	258-378								
			0.25 mm line width	258-227	Graver lengths	Marker strips	258-410	SS-ZB	258-379							
			0.35 mm line width	258-228	0.2/0.3/0.4/0.5/0.7/1.0 mm	WTB (799-501)	258-367	LBHZ	258-380							
			0.50 mm line width	258-229	<b>Calibration aid</b>	WAGO marker card	258-364	PABA	258-381							
					<b>Graver (stainless steel)</b>	Marker tags (209-199, 209-200)	GPE	258-382	258-382							
			36° angled for metal processing	Carrier plate	258-369	<b>Universal engraver and plotter carrier plates</b>										
Plotter accessories	258-141	0.18 mm line width, black	258-426	0.2 mm graver width	258-452/000-002	KS 4/12, 4/18, 4/23, 4/30	258-370	<b>Carrier plates for Weidmüller</b>								
									0.25 mm line width, black	258-427	0.3 mm graver width	258-452/000-003	KES, KLG, KMR, KPX, KSO, KSS, KTE	MC Universal	258-387	
									0.35 mm line width, black	258-428	0.4 mm graver width	258-452/000-004	KWI, SKS, WGO, KAB	258-371	MC SF4-6	258-472
									0.50 mm line width, black	258-429	0.5 mm graver width	258-452/000-005			<b>Carrier plate for Wörtz</b>	
											0.7 mm graver width	258-452/000-007	KPX	258-396	Universal	258-389
Replacement cartridges 5 x 1 ml	258-139			1.0 mm graver width	258-452/000-010	KSEX 18/50	258-471	<b>Carrier plate for Allen Bradley</b>								
Cleaning set	258-140			<b>Vacuum bag</b>	258-457			Universal	258-477							
Cleaning fluid	258-140			for EG 450 Engraver		<b>Universal engraver and</b>		<b>Carrier plate for Möller</b>								
Service kit	258-147	0.18 mm line width, red	258-426 /000-002	<b>Graver (stainless steel)</b>		<b>plotter carrier plates</b>		XB M22-XST	258-390							
		0.25 mm line width, red	258-427 /000-002	0.2 mm graver width	258-458/000-003	90 mm x 100 mm x 3	258-454	<b>Carrier plates for Partex and Contaclip</b>								
Primer Plates, 24 ct	258-256	0.35 mm line width, red	258-428 /000-002	0.4 mm graver width	258-458/000-004	60 mm x 100 mm x 4	258-455	PA+1, UBH 5	258-391							
Dust Cover	258-146	0.50 mm line width, red	258-429 /000-002			30 mm x 100 mm x 9	258-456	PA+2, UBH 10	258-392							
										Full	258-146					
Half	258-146/PW05-0000							<b>Carrier plate for ABB Entelec</b>								
								Universal	258-394							
								<b>Carrier plates for Siemens/VIPA</b>								
								Siemens SPS/VIPA	258-473							
								<b>Conta-Clip</b>								
								Universal	258-398							

# I/O Terminal Block Marking Options

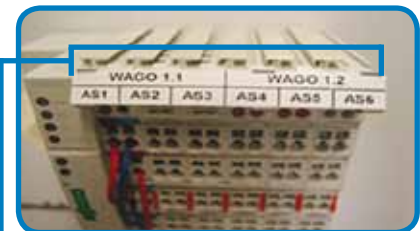
Marker cards for marking the head of the I/O terminal blocks are an alternative to the current marking solution, using mini-WMB markers.

I/O Terminal Block Marking Options	
	Item no.
<b>Built-in marker carrier</b>	
Marker cards	750-100
Marker strips	709-178, 709-177
<b>Marker adapter fits into mini-WSB carrier</b>	
Marker carrier	750-103
Marker strips	709-178, 709-177
Marker cards	750-100
<b>WMB Markers</b>	
	793-501
Also available in various colors	
<b>Mini WSB Markers</b>	
	248-501
Also available in various colors	



Another alternative for marking the head of the I/O modules is to use a marker strip that is held in place by marker carriers which snap into the mini-WSB location. A larger snap in marker tag can also be used, which is printed with our plotter system.

I/O terminal Block Marking Options	
	Item no.
<b>Marker carrier</b>	
	2009-198
	285-442
<b>Marker strip</b>	
	2009-110
<b>Marker cards</b>	
36 markers/card, printed using plotter	211-211
Carrier plate	258-371



## WAGO Service Worldwide

### Germany

WAGO Kontakttechnik  
Minden  
Tel. ++49/571/887/0  
Fax ++49/571/887/169

### Austria

WAGO Kontakttechnik  
Wien  
Tel. ++43/1/615/07/80  
Fax ++43/1/615/07/75

### Belgium

WAGO Kontakttechnik  
Zaventem  
Tel. ++32/2/7/17/90/90  
Fax ++32/2/7/17/90/99

### China

WAGO ELECTRONIC Co. Ltd.  
Tianjin  
Tel. ++86/22/59617688  
Fax ++86/22/59617668

### England

WAGO, Ltd.  
Rugby  
Tel. ++44/1788/568008  
Fax ++44/1788/568050

### France

WAGO CONTACT S.A.  
Paris  
Tel. ++33/148172590  
Fax ++33/148632520

### Italy

WAGO ELETTRONICA SRL  
Casalecchio di Reno (BO)  
Tel. ++39/051/6132112  
Fax ++39/051/6272174

### Japan

WAGO Co. of JAPAN Ltd.  
Tokyo  
Tel. ++81/3/5627/2050  
Fax ++81/3/5627/2055

### Poland

WAGO ELWAG sp. z o. o.  
Wroclaw  
Tel. ++48/71/3604670/78  
Fax ++48/71/3604699

### Singapore

WAGO Electronic Pte. Ltd.  
Singapore  
Tel. ++65/62866776  
Fax ++65/62842425

### Switzerland

WAGO CONTACT SA  
Domdidier  
Tel. ++41/26/676/75/86  
Fax ++65/26/676/75/01

### Mexico

WAGO Corporation  
Queretaro  
Tel. 001/800/309/5975  
+ 52/442/221/5946  
Fax + 52/442/221/5063

### Canada

WAGO Corporation  
Tel. 800/DIN Rail (346-7245)  
Fax 262/255-3232

WAGO Corporation  
N120 W19129 Freistadt Road  
Germantown, Wisconsin 53022  
800 / DIN Rail (346-7245)  
Fax 262 / 255-3232  
info.us@wago.com  
www.wago.us

