

Industrial ETHERNET

Network Infrastructure



WAGO[®]
INNOVATIVE CONNECTIONS

Versatile Network Components



Process and Chemical Engineering



Mechanical Engineering



Building Automation

The WAGO 852 series of products, ranging from simple ETHERNET switches to configurable full featured managed switches, provides comprehensive and scalable network infrastructure solutions for all industries.



Transport and Infrastructure

ETHERNET Product Portfolio

In addition to the infrastructure components, the WAGO ETHERNET product portfolio includes solutions for many applications.



**WAGO-I/O-IPC
758 Series**



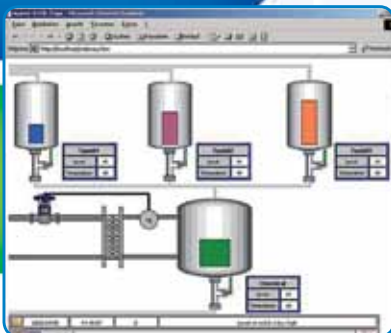
**ETHERNET Couplers
750 Series**



**Programmable
ETHERNET Controller
750 Series**



**Speedway
IP67 I/O
767 Series**



**Programming and
Diagnostic Software**



**WAGO-PROTECT, 10/100 Mbps
Ethernet Surge Protection,
51186919**



**ETHERNET Connectors
for Field Assembly,
750-975, 756-9501/0060-0000,
51205068 (RJ 45 Bulkhead)**

Fiber-Optic Technologies

Single Mode

852-201/107-030

Multi Mode

852-201/107-002



Fiber Slots

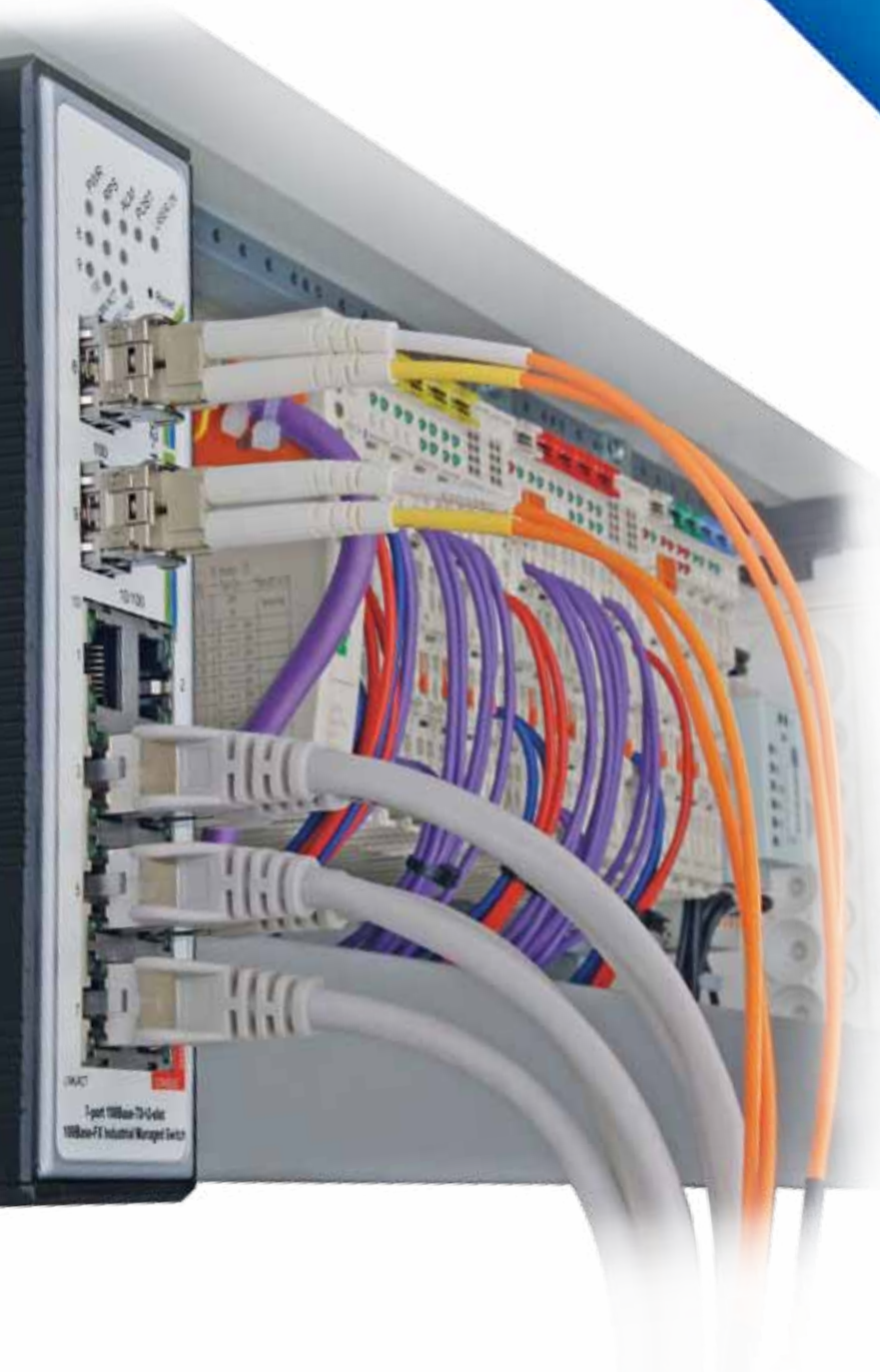
Unmanaged and managed switches are available with fiber slots that can operate with single mode or multi mode SFPs.



ETHERNET via fiber-optic cables offers multiple advantages for industrial applications. High immunity to interference, electrical isolation and extended distances are important attributes for industrial environments.

Fiber slots accept SFP modules that support either single mode or multi mode fiber-optic cables. Single mode provides communication distances up to 75 miles and multi mode up to 1.25 miles.

With the several combinations of copper and fiber-optic ports, WAGO's Ethernet switches can meet the needs of your networking requirements.



Unmanaged Switch

The line of switches from WAGO ensure the scalability of your network infrastructure with outstanding electrical and mechanical characteristics. These robust devices are designed for industrial use and they are fully compliant with IEEE802.3, 802.3u.

Characteristics such as auto negotiation and auto MDI/MDIX (crossover) on all 10/100 BaseTX ports are also realized, as is store-and-forward switching mode.

Standard Switches

- Redundant voltage supply
- Alarm on loss of power
- Alarm on loss of port (configurable by channel)
- Overvoltage/polarity protection
- LED diagnostics
- 9 - 48 V operating range

**8-Port 100 BASE-TX+2-Slot
100 BASE-FX**
Industrial Switch,
852-103

5-Port 100 BASE-TX
Industrial Switch,
852-101

8-Port 100 BASE-TX
Industrial Switch,
852-102

5-Port 100 BASE-TX
Industrial ECO Switch,
852-111

ECO Switches

- IP metal enclosure
- Space saving DIN rail mount: Auto negotiation, MDI/MDIX, full/half duplex transfer mode, store-and-forward switching



Managed Switch

This managed switch offers many setting and configuration possibilities such as:

- SFP modules for fiber-optic cables
 - Full managed
 - XPress ring redundancy < 50 ms recovery
 - Jet ring redundancy < 300 ms recovery
 - SNMP, QoS, VLAN
 - RMON
 - Port mirroring
 - IGMP snooping
 - Port trunking
 - Cable test
 - DHCP
- Multi-Configuration Options
- Web-based management
 - Telnet
 - CCI Interface
 - E-mail notifications
 - IP30 metal enclosure

**7-port 100 BASE-TX+2 slot
100 BASE-FX**
Industrial Switch,
852-104



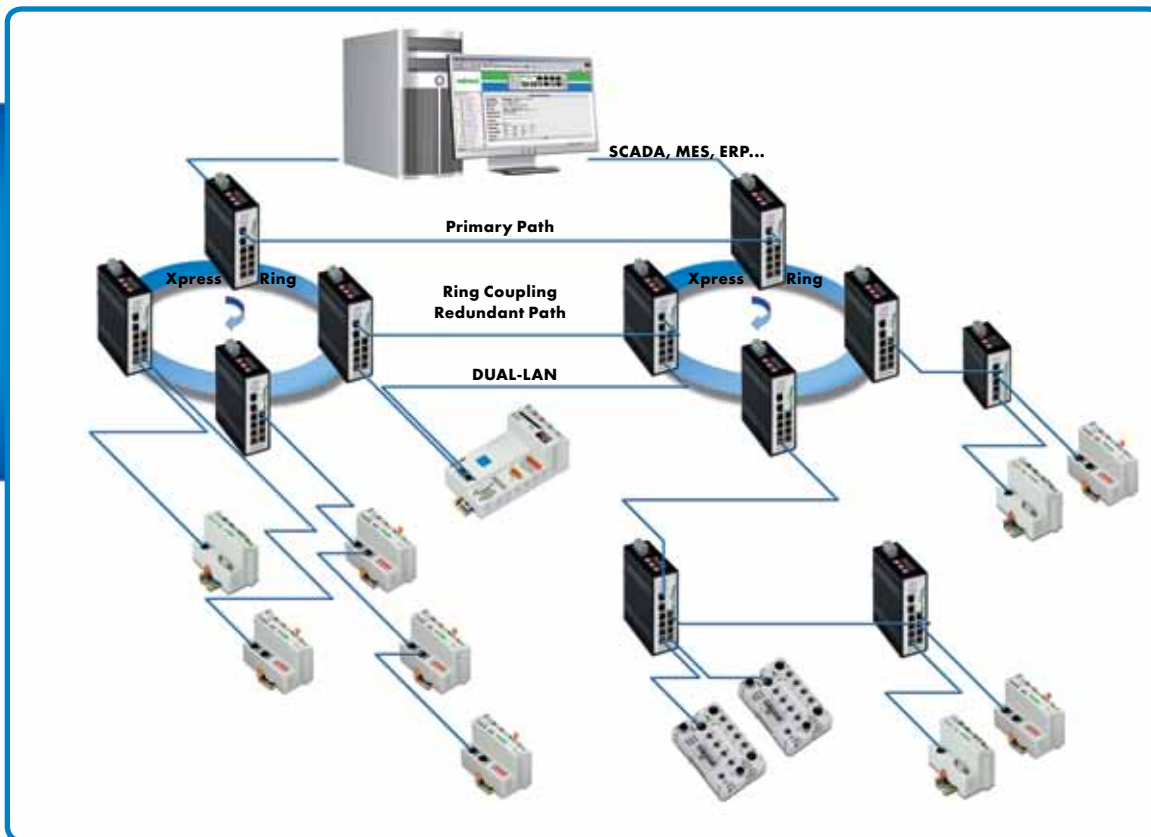
Network Infrastructure with High Availability Thanks to Redundancy

The managed switch has several possibilities for forming redundant network structures.

- Spanning Tree according to IEEE 802.1D, compatible with IT standard
- Jet Ring – a simple ring protocol with a reconfiguration time of <300 ms
- Xpress Ring – fast ring protocol switching time <50 ms

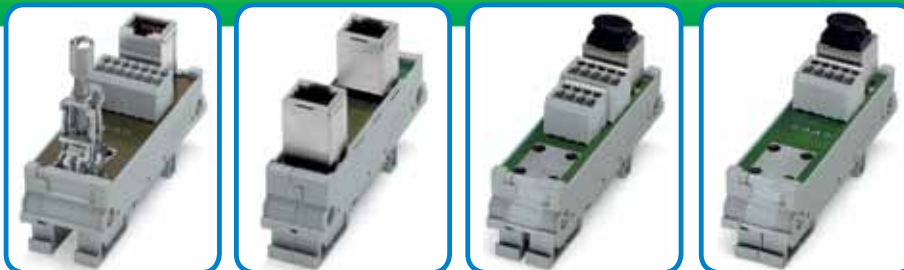
For the monitoring and reporting of errors, the 852-104 Manageable Switch has configurable functions such as e-mail alarm and SNMP traps.

In addition to the configurable functions on the switch, a redundant voltage supply is integrated into all 852-104 Switches; it can also be monitored with the help of an alarm relay.



RJ-45 Interface Modules, 289 Series

ETHERNET interface modules with variable shield connections. Several versions are available for different types of applications.



WAGO Service Worldwide

Germany

WAGO Kontakttechnik
Minden
Tel. ++49/571/887/0
Fax ++49/571/887/169

Austria

WAGO Kontakttechnik
Wien
Tel. ++43/1/615/07/80
Fax ++43/1/615/07/75

Belgium

WAGO Kontakttechnik
Zaventem
Tel. ++32/2/7/17/90/90
Fax ++32/2/7/17/90/99

China

WAGO ELECTRONIC Co. Ltd.
Tianjin
Tel. ++86/22/59617688
Fax ++86/22/59617668

England

WAGO, Ltd.
Rugby
Tel. ++44/1788/568008
Fax ++44/1788/568050

France

WAGO CONTACT S.A.
Paris
Tel. ++33/148172590
Fax ++33/148632520

Italy

WAGO ELETTRONICA SRL
Casalecchio di Reno (BO)
Tel. ++39/051/6132112
Fax ++39/051/6272174

Japan

WAGO Co. of JAPAN Ltd.
Tokyo
Tel. ++81/3/5627/2050
Fax ++81/3/5627/2055

Poland

WAGO ELWAG sp. z o. o.
Wroclaw
Tel. ++48/71/3604670/78
Fax ++48/71/3604699

Singapore

WAGO Electronic Pte. Ltd.
Singapore
Tel. ++65/62866776
Fax ++65/62842425

Switzerland

WAGO CONTACT SA
Domdidier
Tel. ++41/26/676/75/86
Fax ++65/26/676/75/01

Mexico

WAGO Corporation
Queretaro
Tel. 001/800/309/5975
+ 52/442/221/5946
Fax + 52/442/221/5063

Canada

WAGO Corporation
Tel. 800/DIN Rail (346-7245)
Fax 262/255-3232

WAGO Corporation
N120 W19129 Freistadt Road
Germantown, Wisconsin 53022
800 / DIN Rail (346-7245)
Fax 262 / 255-3232
info.us@wago.com
www.wago.us

