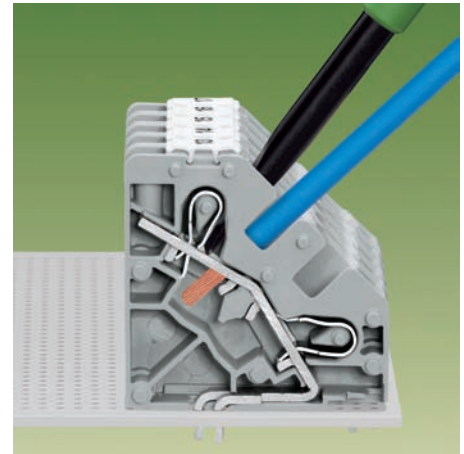
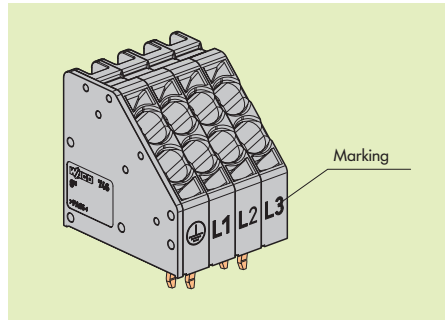
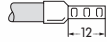


Modular Terminal Blocks and Terminal Strips 6 mm²/AWG 10 **CAGE CLAMP® S**

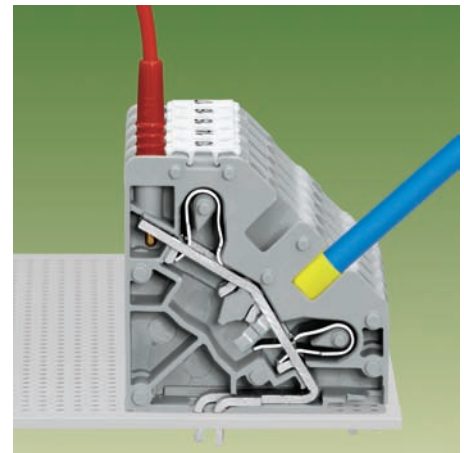
Pin Spacing 7.5 mm/0.295 in; Series 746

Pin spacing 7.5 mm / 0.295 in 2 x 0.5 – 6 (10) mm ² 2 x AWG 20 – 8 400 V/6 kV/3 600 V, 50 A I _N 41 A 13 – 15 mm / 0.55 in *		
---	--	--

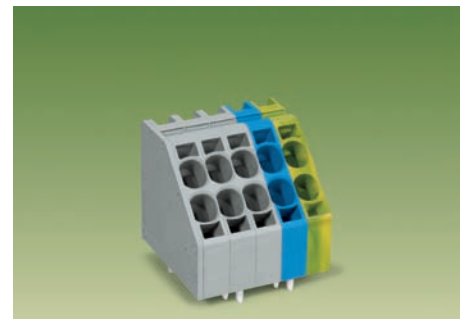
① Push-in conductor sizes: 0,5 mm² – 10 mm² „e + f“;
 AWG 16 – 8 (1,5 mm² – 10 mm²) „s“ and
 AWG 16 – 10 (1,5 mm² – 6 mm²)
 “insulated ferrules, 12 mm/0.472 in”



Connecting flexible wires using a screwdriver 5.5 mm



Solid wires and fine-stranded wires with ferrules can be simply pushed in
 Testing with test plug Ø 2 mm/0.079 in



Terminal blocks of different colors upon request

No. of poles	Item No.	No. of poles	Item No.
2-conductor terminal strips, grey, 2 x 2 pins / pole staggered			
2	746-2302		
3	746-2303		
4	746-2304		
5	746-2305		
6	746-2306		
7	746-2307		
8	746-2308		
9	746-2309		
10	746-2310		
12	746-2312		
For other lengths, please contact factory			
Additional item numbers for colored terminal strips			
light grey	.../000-009		
blue	.../000-006		
green-yellow	.../000-016		
light green	.../000-017		
Accessories (Marking see Full Line Catalog W4 Volume 2, Section 11)			
Screwdriver with partially insulated shaft			
	(5.5 x 0.8) mm		
	210-621		
Test plug with cable 500 mm/1.77"			
	210-136 2 mm/0.079 in Ø, red		
	210-137 2.3 mm/0.091 in Ø, yell.		

Dimensions (in mm) Diameter of drilled hole: 2.2^{+0.1} mm L = No. of poles x pin spacing + 2.7 mm

